

Bluetooth® Panic Button



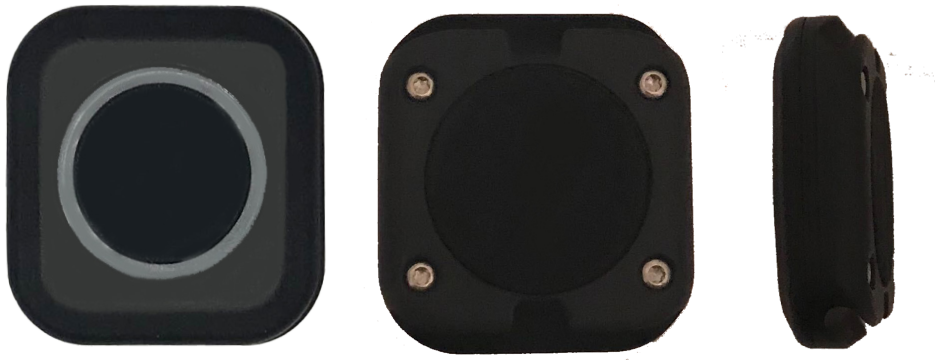
The React Mobile Bluetooth Panic Button is designed to pair with company-issued mobile devices to provide an elegant safety solution for the mobile workforce.

Our Bluetooth Panic Button has been redesigned from the ground up to provide a robust, simple wearable device that staff can access quickly and discreetly to call for help when assistance is needed. It is compatible with both iOS and Android mobile devices and pairs via Bluetooth with the React Mobile App running on these devices.

The panic button device consists of a small slim wearable form factor, running on internally developed firmware. This device is capable of significant longevity (life) expectations that far exceed standard Bluetooth devices.

KEY FEATURES

- Connects via Bluetooth Low Energy (BLE) to devices.
- Compatible with Apple or Android devices.
- Wearable options.
- 24 month battery life.
- CR 2032 coin cell battery.
- Dimensions: 1.45" x 1.37" x .40".



REACT MOBILE: STAFF SAFETY SOLUTIONS

The hotel industry is improving the safety of hotel workers everywhere. When your reputation is on the line, we understand that finding the right solution to protect your employees can be overwhelming. React Mobile guarantees that our safety devices put you in compliance with legislation or your brand's standards.